

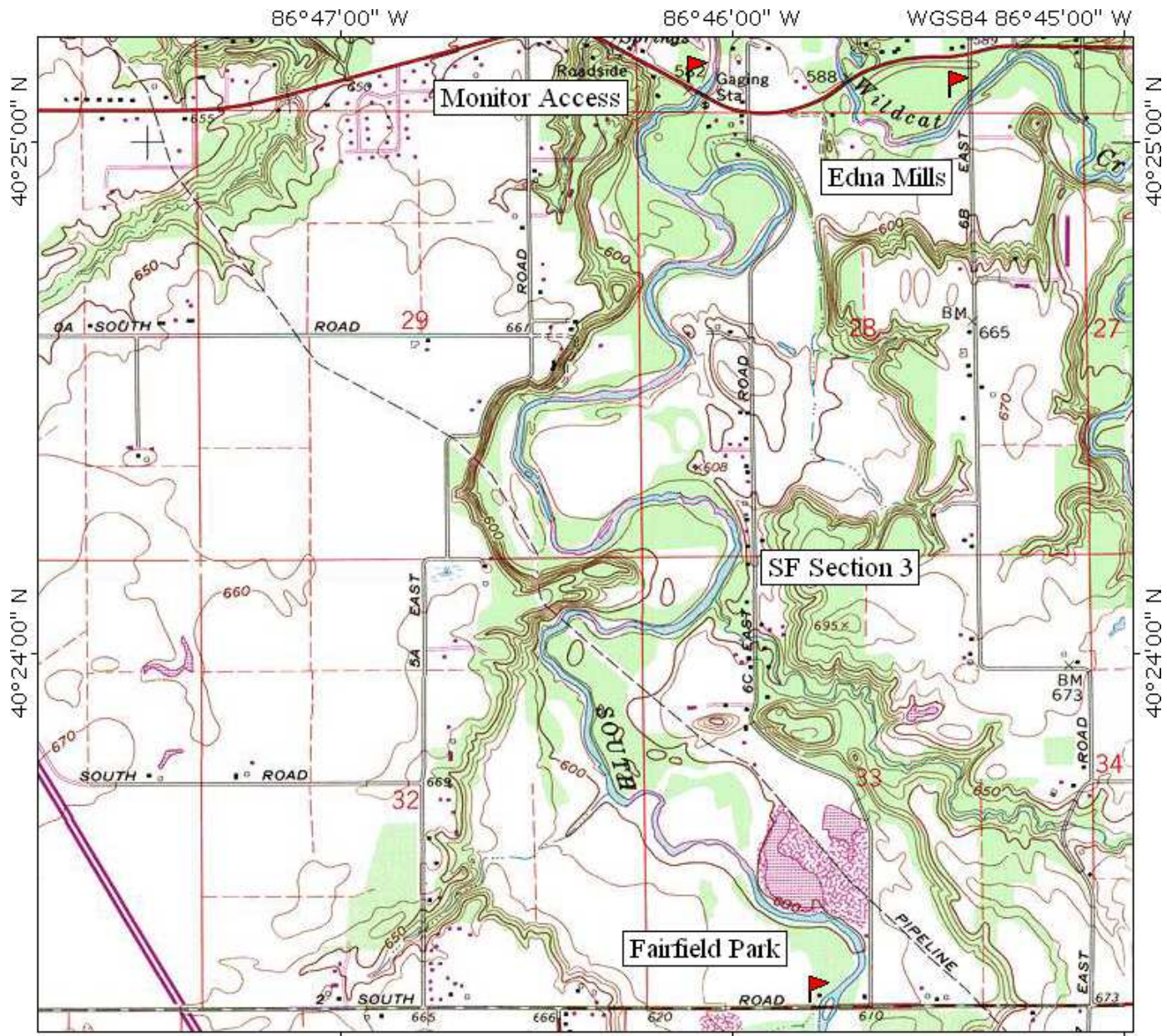
MIN
3 1/2°

86°48'00" W 86°47'00" W WGS84 86°46'00" W

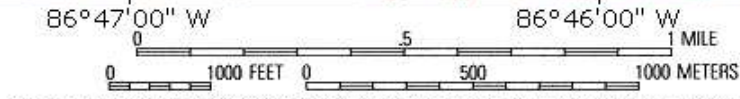
0 5 1 MILE

0 1000 FEET 0 500 1000 METERS

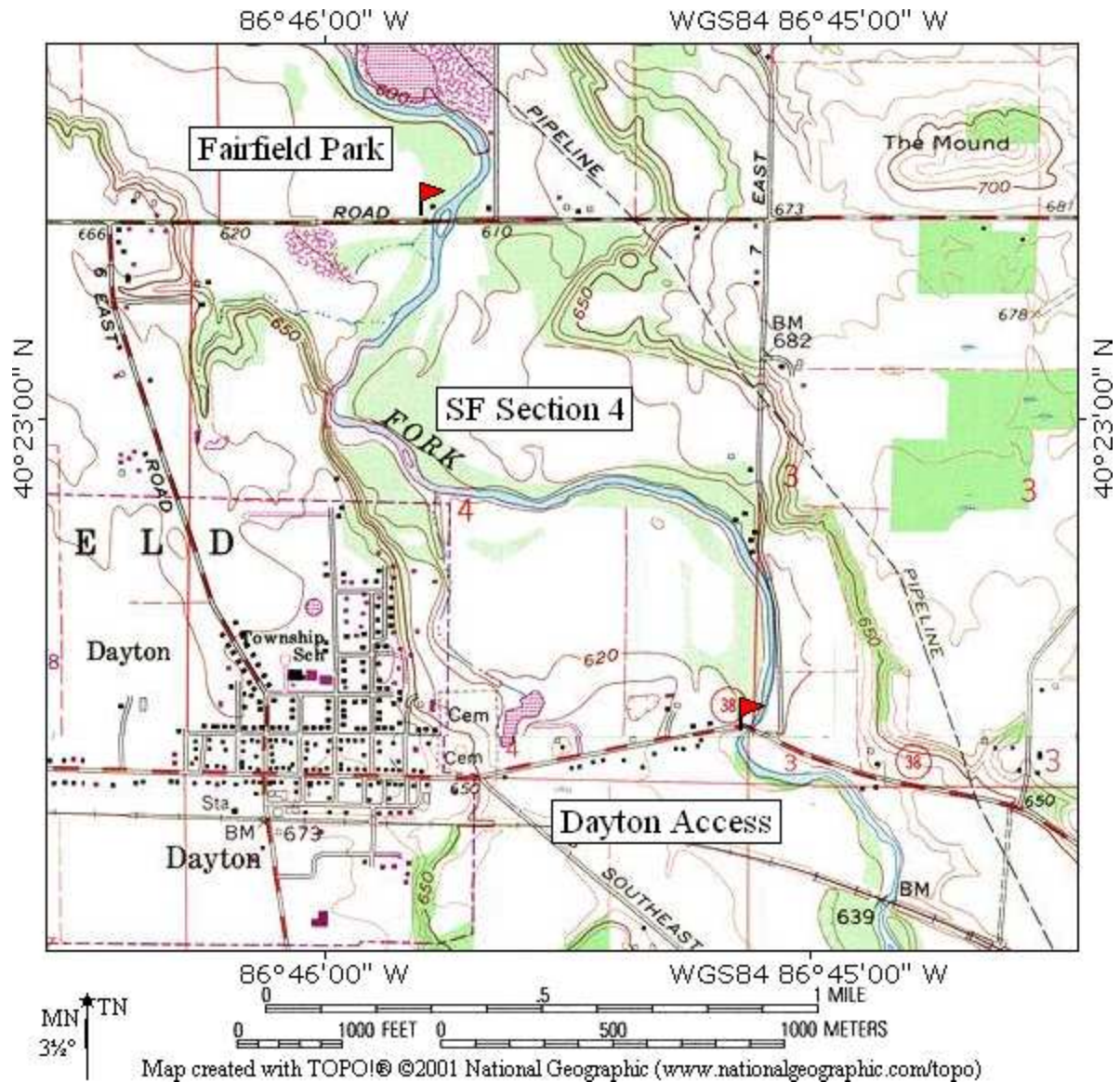
Map created with TOPO!® ©2001 National Geographic (www.nationalgeographic.com/topo)

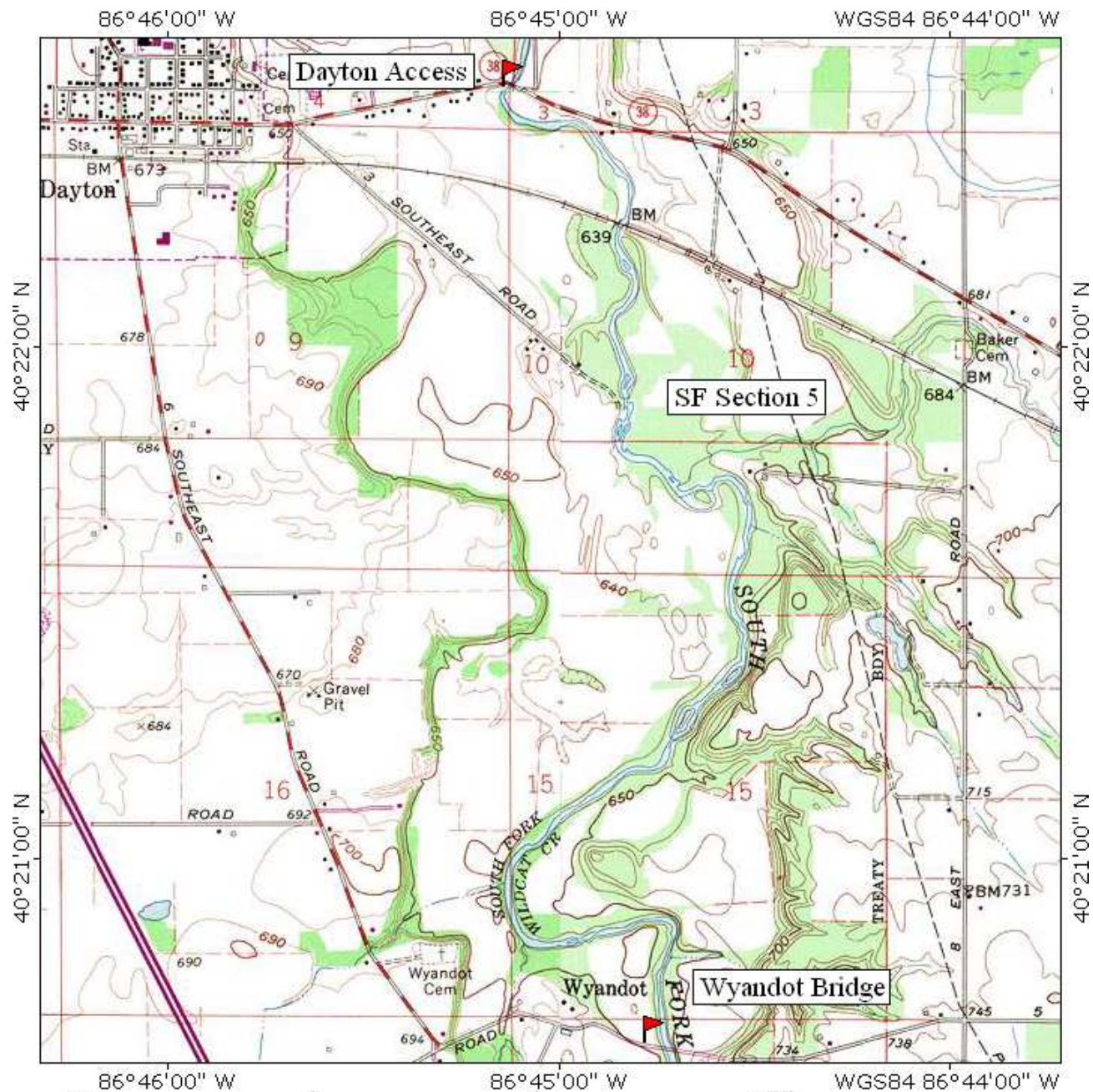


MN
3 1/2°

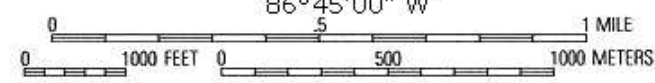


Map created with TOPO!® ©2001 National Geographic (www.nationalgeographic.com/topo)





MN
3 1/2°



Map created with TOPO!® ©2001 National Geographic (www.nationalgeographic.com/topo)